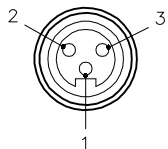
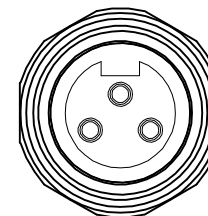
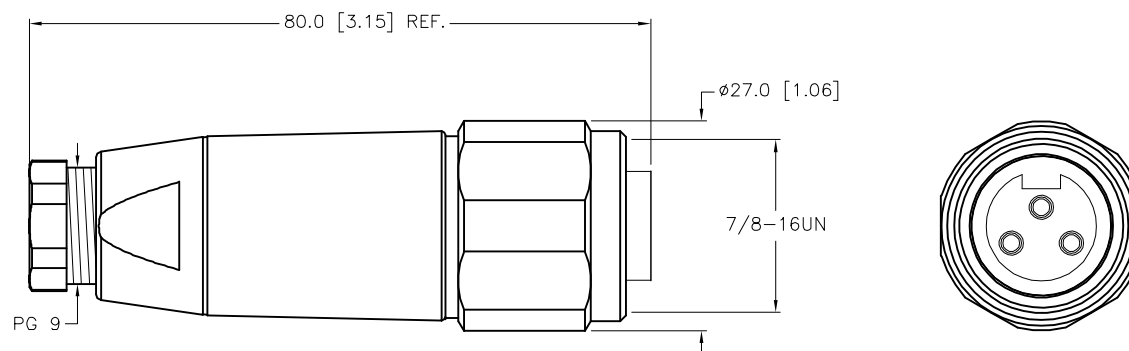


FEMALE END VIEW



SPECIFICATIONS

HOUSING MATERIAL/COLOR	GLASS FILLED NYLON/BLACK
CONTACT MATERIAL/PLATING	BRASS/GOLD
COUPLING NUT MATERIAL	STAINLESS STEEL
RATED CURRENT [A]	9.0 A
RATED VOLTAGE [V]	600 V
MAXIMUM WIRE SIZE	16 AWG
TERMINATION METHOD	SCREW TERMINAL
TEMPERATURE RATING	-40°C to +85°C (-40°F to +185°F)
PROTECTION CLASS	MEETS NEMA 1,3,4,6P AND IEC IP 67
CABLE GRIP RANGE	PG 9 = 6-8mm



SOURCE DRAWING - FOR REFERENCE ONLY

RELATED DOCUMENTS		3RD ANGLE PROJECTION		<div>THIS DRAWING IS CONFIDENTIAL AND THE PROPERTY OF TURCK INC. USE OF THIS DOCUMENT WITHOUT WRITTEN PERMISSION IS PROHIBITED.</div> <div>TURCK</div>		3000 CAMPUS DRIVE MINNEAPOLIS, MN 55441 1-800-544-7769 (763) 553-7300 (763) 553-0708 fax www.turck.us			
1.									
2.		<div>ALL DIMENSIONS DISPLAYED ON THIS DRAWING ARE FOR REFERENCE ONLY</div>		DRFT	NF	DATE	05/18/18	DESCRIPTION BV 4131-0/9	
3.				APVD	F.M.	SCALE	1=1.0		
4.		<div>CONTACT TURCK FOR MORE INFORMATION</div>		<div>UNIT OF MEASUREMENT</div> <div>MILLIMETER [INCH]</div> <div>DO NOT SCALE THIS DRAWING</div>			IDENTIFICATION NO.		REV
							U2-32214		A
							FILE: U2-32214		SHEET 1 OF 1

A	DRAWING RELEASE	NF	06/01/18	
REV	DESCRIPTION	BY	DATE	ECO. NO.